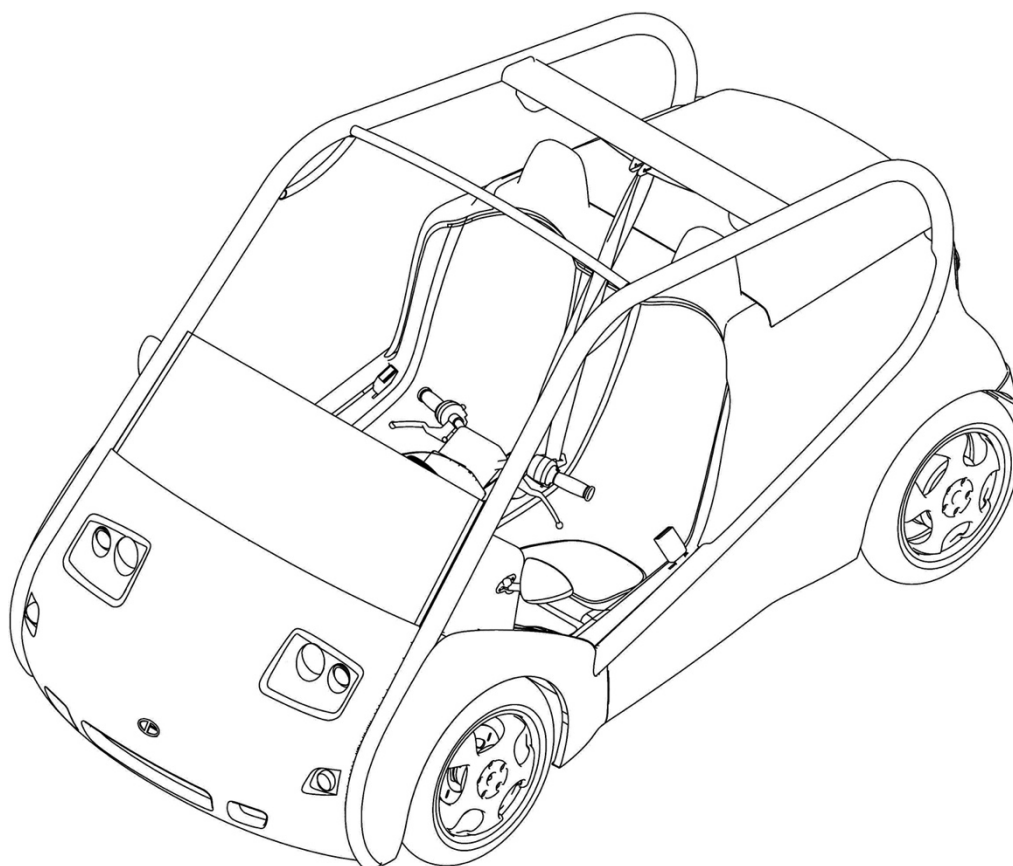


Scootercar

# USER MANUAL

Customers

---



---

All rights reserved, Scootercar Ltd, 2021



# Contents

1. Introduction	3
2. Scootercar specifications	4
3. Parts overview	5
4. Identification numbers	6
5. User guide	7
6. Maintenance and inspections	12
7. Safe driving tips	13
8. Warranties	13

# 1. Introduction

Dear users,

Please read this user manual carefully to familiarize yourself with safe and effective user procedures.

A Scootercar is produced under a strict quality control system. For optimal use the Scootercar must undergo all periodic checks. The use of original spare parts is highly recommended. In case of a structural or production defect, assistance is guaranteed under valid warranty. The warranty mentioned above is not valid under the following conditions:

- Maintenance or repair is not carried out in the appropriate manner
- The designated lubrication oil is not used.
- Non-original parts are utilized and/or modifications to the original design are carried out
- The instructions in the owner's manual are not properly followed.
- The battery has been programmed in a way that exceeds speed and currents factory settings.
- Parts subject to normal wear and tear such as seats, tires, brakepads, light bulbs, cables etc. are not covered under warranty.

This manual is a guide for the operation, inspection and basic maintenance of this Scootercar. Please retain this manual for future maintenance. If you have any further questions please contact your Scootercar dealer or importer.

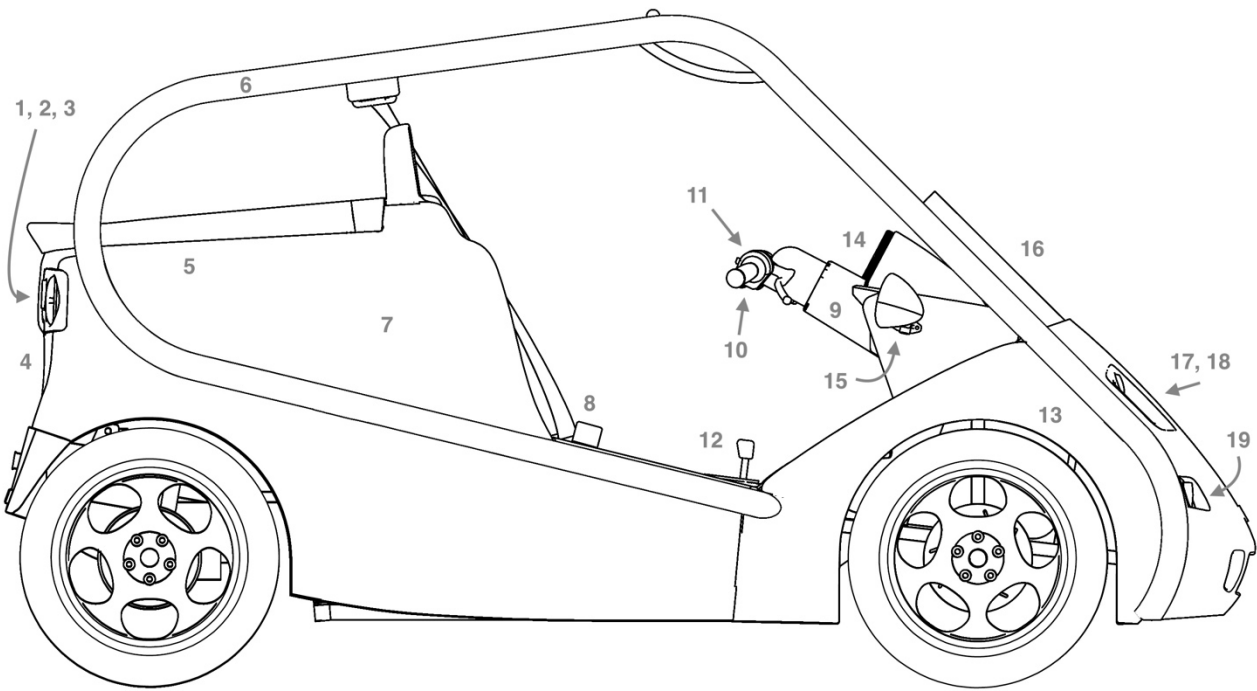
## ! Caution

- Be aware that when the battery indicator shows 2 bars and the low battery indicator flashes the speed of the vehicle will soon decrease to 30KMH/ 20MPH.
- Never clean the colored panels with thinner or a similar aggressive paint solvent

## 2. Scootercar specifications

	EU	USA
Length	239 cm	7,8 ft
Width	126 cm	4,1 ft
Height	133 cm	4,4 ft
Wheelbase	160 cm	5,3 ft
Weight empty	333 kg	734 lb
Weight maximum (man)	550 kg	1212 lb
Luggage compartment	255 ltr	67 gal
Maximum speed	60 KMH	37,2MPH
Average range	80 Km	50 Miles
Tires	145 / 60 – 13"	
Motor	Brushless 3 phase 5Kw	
Battery	80 Ah Lithium Ion 72 V, 5,7kW	
Controller	Curtis USA	
Brakes	4 hydraulic disc brakes	

### 3. Parts Overview



Number	Parts
1	Rear light
2	Rear brake light
3	Rear turn signal light
4	Number plate light
5	Luggage compartment
6	Roll cage
7	Charging socket
8	3 points seat belts
9	Main key switch/ Steering lock
10	Throttle grip (right handlebar grip)



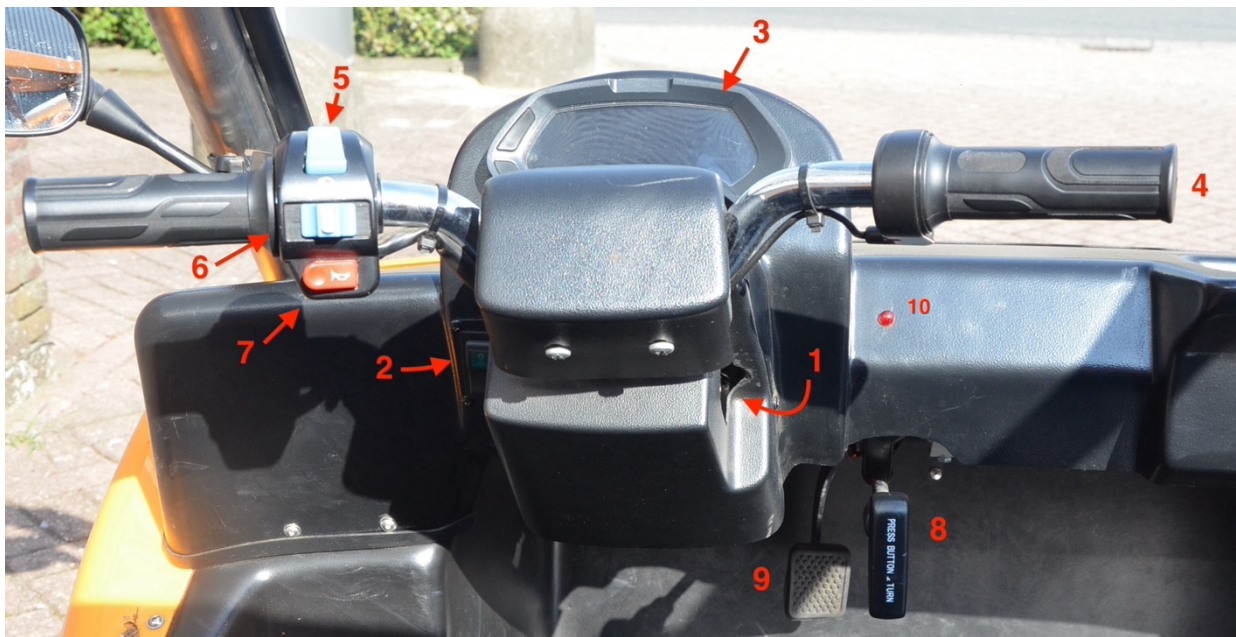
# 5. User Guide

## 5.1 Seatbelts



The vehicle is equipped with 2 DOT certified 3-points seatbelts, 1 for each passenger. When taking a seat for a ride always make sure the seatbelts of all passengers are fastened before taking off.

## 5.2 Switches and controls



Number	Switches
10	Seat switch
2	Key switch
3	Forward/ Reverse switch

Number	Switches
4	Dashboard display
5	Throttle
6	Big light switch
7	Turn indicator switch
8	Horn
9	Parking brake
10	Regular brake

#### 5.2.1 Seat switch

The vehicle is equipped with a seat switch. This ensures that the vehicle can only be used when the driver is seated in the drivers seat. When the indicator light is on (red), the seat switch is not activated. When taking place in the drivers seat the seat switch will be activated. When the driver is ejected from the drivers seat during the ride, the vehicle will automatically switch off.

#### 5.2.2 Key switch

To start the vehicle, insert the key into the key switch and turn the key until the display flashes on. When done with the ride, taking out the key from the key switch will automatically engage the steering lock.

To switch the vehicle on, switch in neutral and wait until the orange controller diagnose stops flashing before switching the vehicle in forward/ reverse. The orange controller diagnose is located on the dashboard display (see 5.4).



### 5.2.3 Forward/ Reverse switch



With this switch, the vehicle can be put in forward and rearward motion. The display indicates 'F' when in Forward, 'N' when in Neutral and 'R' when in reverse.

### 5.2.4 Parking brake

The parking brake operates different for the EU type and the USA type. Pictured is the EU type. To engage the parking brake, pull the handle towards you and turn to the left. The USA type brake is a regular parking brake located between the 2 seats, which engages when pulled up.

### 5.2.5 Regular brake

Braking is done with the brake pedal, operated with the right foot.

### 5.2.6 Throttle

To accelerate turn the throttle towards you. The maximum speed is 60km/h, or 37MPH.

5.3 Dashboard display



Number	Dashboard displays
1	Speed indicator
2	Trip meter
3	Battery
4	Power outage
5	Odometer
6	Clock
7	Adjustment button 1
8	Adjustment button 2
9	Big light indicator
10	Warning light indicator
11	Controller diagnose indicator

Number	Dashboard displays
12	Seat switch indicator

### 5.3.1 Adjust tripmeter

To adjust the tripmeter, push adjustment button 1 and 2 simultaneously.

### 5.3.2 Adjust clock

To adjust the clock push adjustment button 2 and switch on the key switch. First adjust the hour, then the minutes.

## **5.4 Battery and charging**

### 5.4.1 Range

The vehicle is equipped with an 80Ah Lithium Ion 72-volt battery. This battery allows for a range of approximately 80 kms. Range will differ depending on driving habit, type of terrain, surface, tire pressure and weight of the passenger and load.

### 5.4.2 Charging



To charge the vehicle insert the designated charger into the socket in the vehicle. Then insert the connector into a 220V power outlet. It takes approximately 4 hours to charge an entirely empty battery. The red light will flash at the charging socket and turns green when fully charged.

Important: for safety reasons the vehicle cannot be driven when the charging cable is connected to the vehicle.

## **5.5 Tires and pressure**

This vehicle is equipped with Wanda WR080 tires. The recommended tire pressure is 33PSI/ 2,3bar.

## 6 Maintenance and inspections

### 6.1 Brakes, tires & gear box

Components	Maintenance	Frequency
Brake pads front/ rear	Check performance	Every 2.000mi or 3.200km
Brakes	Check brake fluid level (DOT 4 brake fluid)	Every 650mi or 1.000km
Tires	Check tire pressure	Every 1.500mi or 2.500km

### 6.2 Lights

When replacing light bulbs please make sure to use the following light bulbs

Light	Type of bulb
Low beam	H3 12V 55W light bulb
High beam	H3 4014 Led light bulb (10W). <b>NOTE: LED bulb only!</b>
Signal light front/ rear	12V/ 5W regular light bulb
Rear brake light	12V 5/21W
License plate light	12V/ 5 W

## 7 Safe riding tips

### 7.1 Pre-departure checks

- Battery. Make sure it is charged to at least 80% (8 out of 10 bars). If this is not the case, make sure to charge it before leaving.
- Lights. Perform a check of all lights before leaving.
- Brake pedal. Before leaving test the brake pedal briefly to familiarize yourself with it and ensure it operates correctly.
- Tires. Make sure the tires have the right tire pressure (33psi/ 2,3bar) and does not have any cuts or other forms of abrasion.

### 7.2 Safety during driving

- Stay seated while moving. Only exit the vehicle when it is parked.
- Keep your hands and arms inside the vehicle.

## 8 Warranties

### 8.1 Warranty claims

All warranty claims must be submitted to Scootercar (email: [info@scootercar.com](mailto:info@scootercar.com)) in writing, accompanied by an accurate specification of the facts to which the complaint relates and accompanying photos. When a faulty part is covered by warranty Scootercar will replace it with a new part. Any labor or shipping costs will however be charged. This warranty only applies to the first person to purchase the vehicle.

Any claims outside this warranty, e.g., for compensation or inability to use the vehicle, will not be entertained.

The original duration of the warranty is not extended by any warranty service. Damage caused by wear, neglect (failure to maintain and care for the vehicle), crashes, excessive strain caused by excess loads, incorrect assembly and handling or any changes to the vehicle is not covered by warranty. No warranty claims can be made if the vehicle is used in competitions, stunts or if exposed to extreme strain of any other type.

## 8.2 Warranties

Warranties only apply to the first owner of the vehicle and is not transmittable to the next owner. The following warranties apply to the different parts of the vehicle:

Parts	Warranty
Battery	2 years
Motor	2 years
Shock absorbers	1 year
Dashboard display	No warranty
Panels	No warranty
Wear & Tear parts*	No warranty

\* Wear & Tear Parts: seats, tires, brakepads, light bulbs, cables, etc.

Please review our separate warranty document for further information on warranties.